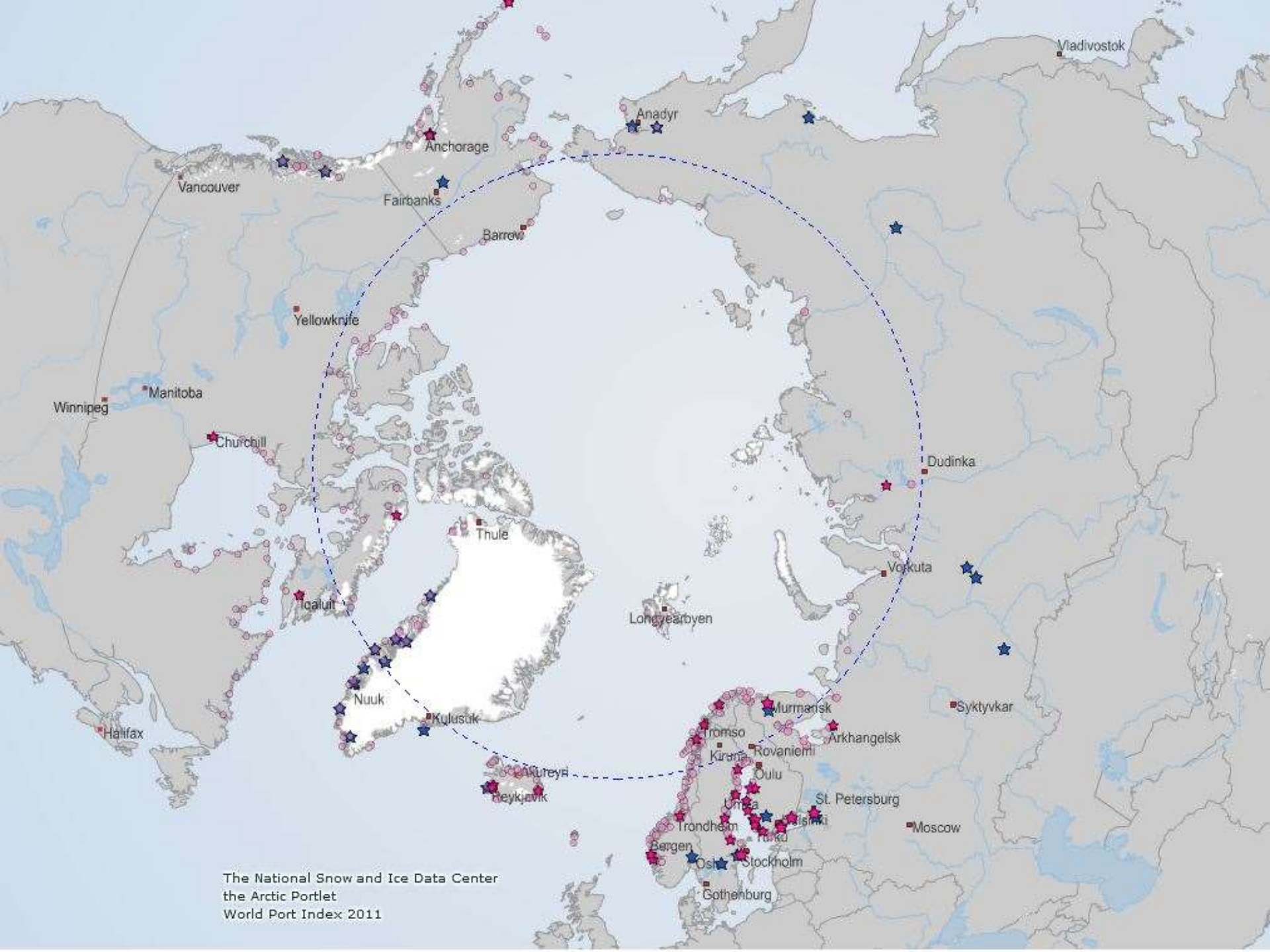


**11<sup>th</sup> Conference of Parliamentarians  
of the Arctic Region  
Whitehorse, Yukon  
September 9-11, 2014**

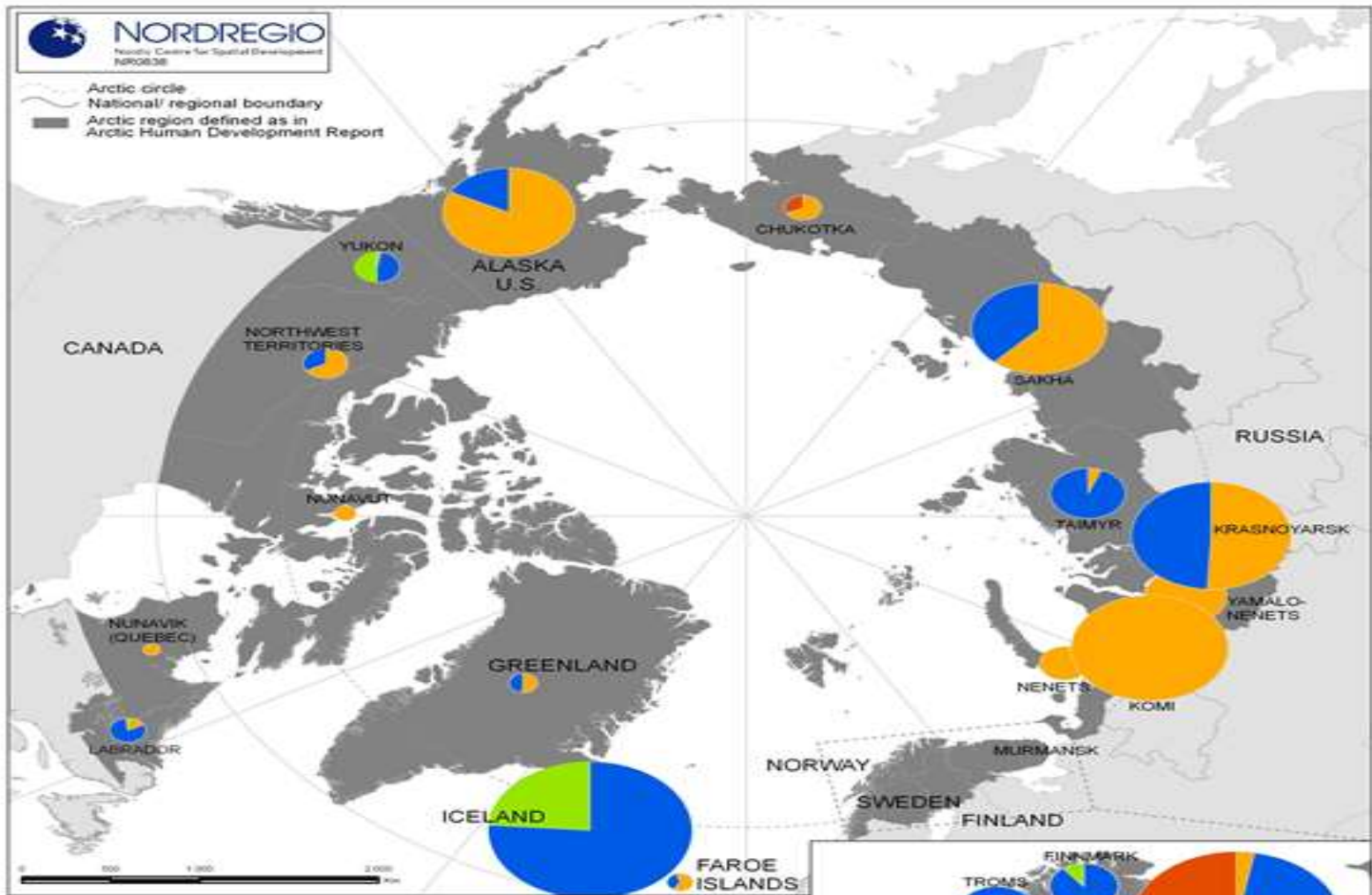
Session 3: Enhancing Northern  
Economics: Responsible Resource  
Development and Capacity Building



The National Snow and Ice Data Center  
the Arctic Portlet  
World Port Index 2011



Arctic circle  
 National/ regional boundary  
 Arctic region defined as in Arctic Human Development Report



**Generation of electricity by source\***

- Fossil fuels
- Hydropower
- Wind and other sources
- Nuclear



Sources: NO; SE: National Statistics Institutions; FI: Energiateollisuus; GL, IS, FO, Alaska: EIA and own data; RU: Estimations based on data from Goskomstat. Canada: Centre for Energy

\* CAN, RU: 2009; AK, FI: 2008; SE, NO, FO, GL: 2007



[www.ims.uaf.edu/artlab](http://www.ims.uaf.edu/artlab)



## Welcome



### What is UNITE US?

The UNITE US curriculum focuses on Arctic climate and interweaves Native and Western perspectives with the ultimate goal of instilling cultural pride, increasing climate literacy as a path to academic success and graduation for Interior Alaskan students in grades 7 through 12.



### Special Features



**Digital Lectures**



**Classroom Lessons**



**Multimedia**

### Scientists

from these organizations help develop UNITE US courses:

- Geophysical Institute
- UAF
- Alaska Climate Research Center
- Alaska Native Knowledge Network
- International Arctic Research Center
- National Weather Service

### Contact Us:

Geophysical Institute  
903 Koyukuk Drive  
Fairbanks AK 99775

[Email Contact](#)



Alpine Oil Field, North Slope Alaska/via Renee Renn McCormick



### Where We Ski

Our NANA region ski program, serving more than 1,500 students and adults, takes place in April each year. Villages on skis are Ambler, Buckland, Deering, Kiana, Kivalina, Kobuk, Kotzebue, Noatak, Noorvik, Selawik and Shungnak. With the success of NANANordic, other regions of Alaska have requested their own programs. In 2014 the program will expand to 25 communities across Alaska from Anchorage to villages around Bethel, Aniak, Unalakleet, Nome and Barrow.

### About NANANordic

NANANordic's goal is introduce the lifetime sport of cross-country skiing to rural Alaska starting with villages in the NANA region. It takes the support of many organizations and individuals to make this unique ski program possible. Please join us on this exciting adventure as we get Alaska youth skiing across the Arctic!

[Join the Journey](#)

### Skiing across the Arctic







<http://www.arctic.noaa.gov/aro/ipy-1/>